

# Winterthur Museum John Hewson



Quilt replica designed by Gail Kessler

Size: 105½" x 107½"

by Kathy Hall  
for Winterthur Museum  
and Country Estates



makower uk®

1384 Broadway  
New York, NY 10018  
(800) 223-5678

[www.andoverfabrics.com](http://www.andoverfabrics.com)

Revised 1/9/12

# Winterthur Museum John Hewson Quilt

*Introducing Andover Fabrics new collection: John Hewson by Kathy Hall  
for Winterthur Museum and Country Estates. Quilt replica designed by Gail Kessler*

Quilt finishes 105½" x 107½"

## Fabric Requirements

		Yardage	Fabric
<b>Fabric A</b>	center panel	⅔ yard	5491-M
<b>Fabric B</b>	border 1	2 yards	5493-M
<b>Fabric C</b>	border 4	3½ yards	5492-M
<b>Fabric D</b>	border 2	2½ yards	5494-M
<b>Fabric E</b>	border 3	⅓ yard	5496-M
<b>Fabric F</b>	borders 1 & 3	⅔ yard	5495-M
<b>Fabric G</b>	borders 1 & 3	2 yards	5497-M
<b>*Fabric H</b>	background	4 yards	3498-L2
<b>Fabric H</b>	backing	9¾ yards	3498-L2

\*includes binding

## Cutting Directions

**Note:** All measurements are cut sizes and include ¼" seam allowances. Borders are cut the exact lengths required plus ¼" seam allowances. WOF designates the width of fabric from selvedge to selvedge (approximately 42" wide).

<b>Fabric A</b>	Fussy-cut (1) rectangle 20" x 22"
<b>Fabric B**</b>	Cut (6) motifs for fused appliqué
<b>Fabric C</b>	Fussy-cut (2) borders 10" x 89", cut lengthwise Fussy-cut (2) borders 10" x 87", cut lengthwise Fussy-cut (8) squares 10⅜" x 10⅜" (see Step 6)
<b>Fabric D</b>	Fussy-cut (2) borders 7" x 57", cut lengthwise Fussy-cut (2) borders 7" x 55", cut lengthwise Fussy-cut (8) squares 7⅜" x 7⅜" (see Step 3)
<b>Fabric E</b>	Fussy-cut (4) squares 10" x 10" (see Step 5)
<b>Fabric F**</b>	Fussy-cut (8) rectangles 6" x 10" of larger bird Cut (9) small single birds
<b>Fabric G**</b>	Fussy-cut (12) rectangles 13" x 10" Cut (6) motifs
<b>Fabric H</b>	Cut (2) borders 18" x 57", cut lengthwise Cut (2) borders 18" x 55", cut lengthwise Cut (11) strips 2½" x WOF for binding Cut (20) rectangles 4" x 10" Cut (4) rectangles 3" x 10"
<b>Backing (H)</b>	Cut (3) panels 38" x 116", pieced to fit quilt top with overlap on all sides

\*\*Refer to the directions before cutting motifs.

*The Winterthur Museum in Delaware is known for its magnificent textiles. Among its treasures is a broderie perse counterpane made with fabric printed by John Hewson, a Philadelphia printer active in the late 18th and early 19th centuries. This quilt is a representation of that early quilt. You may wish to make your own heirloom by using traditional hand appliqué methods, although directions here are for fusing the appliqué and finishing with machine stitching.*

## Making and Assembling the Quilt

1. Some novelty prints are cut in rectangles for the center panel and pieced Border 3. Other prints are fussy-cut for fused appliqué in Border 1, as described in Step 2. Center and fussy-cut a Fabric A 20" x 22" rectangle (this includes ¼" seam allowance) for the center panel. Sew longer Fabric H borders to the sides of the panel, starting and stopping stitching ¼" from the edges of the panel. Sew shorter Fabric H borders to the top and bottom. Use your favorite method to miter the corners, being careful that the corners lie flat. Trim the excess fabric from the corners.
2. Refer to the quilt photograph for positioning motifs in the first border. Note that Fabric B motifs are placed in the corners along the miters. Two more Fabric B motifs are trimmed at the end of their stems, and then they are centered on the sides. Fabric G motifs are positioned along the diagonal seams, and they also are centered at the top and bottom. Butterflies from Fabric B are placed around the center panel. Single birds from Fabric F are added between larger motifs where shown.

Fold the quilt in half horizontally and vertically and finger press the folds to use as placement guides for appliqué. To prepare the motifs for fused appliqué, follow manufacturer's instructions and fuse webbing to the wrong side of each complete motif. Cut around the designs, leaving a narrow allowance around the complete motifs. Position and fuse the patches to the border, following manufacturer's instructions. Finish the edges with a machine straight stitch using off-white thread, or use an invisible thread with a blind appliqué machine stitch.

# Winterthur Museum John Hewson Quilt

3. Before you cut all squares for the corner blocks in Border 2, make a sample block to be sure that you cut the squares in the right place on the striped print. Look carefully at the diagram for placement. Fussy-cut a  $7\frac{3}{8}$ " Fabric D square. Cut the square in half diagonally in the direction shown (Diagram 1). Cut a second square in mirror image and cut in half diagonally. Or, do not cut a second square and follow this method to make a perfect mirror-image block: After the first square is cut diagonally, place the appropriate fabric triangle on the printed stripe with right sides together, aligning the print of the cut triangle with the printed stripe underneath (Diagram 2). Cut the second triangle using the first as a template. Join 2 mirror-image triangles to make a Border 2 Block. Cut patches in the same way to make a total of 4 blocks. Discard the unneeded triangles.



Diagram 1



Diagram 2

4. Sew long Fabric D borders to the sides of the quilt. Sew Border 2 Blocks to ends of short borders and sew to the top and bottom.

5. Refer to the Quilt Diagram to make Border 3. To make a side border, join 3 Fabric G  $13" \times 10"$  rectangles, 2 Fabric F  $6" \times 10"$  rectangles, and 6 Fabric H  $4" \times 10"$  rectangles in the order shown. Sew to the side of the quilt. Repeat for the other side. Likewise, join 3 Fabric G rectangles, 2 Fabric F rectangles, 4 Fabric H  $4" \times 10"$  rectangles, and 2 Fabric H  $3" \times 10"$  rectangles in the order shown. Refer to Diagram 3 to determine where to cut the Fabric E  $10"$  squares (cut edge will be at lower left-hand corner of print, so that  $\frac{1}{4}"$  of print gets sewn into the seam allowance). Sew Fabric E squares on the ends. Sew to the top. Repeat for the bottom.

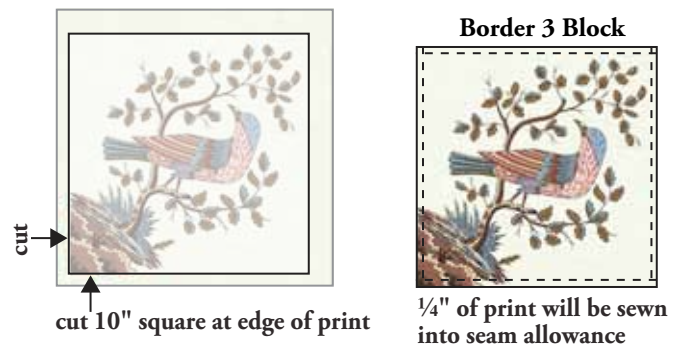


Diagram 3

6. The corner blocks in Border 4 are made as described in Step 3. Refer to Diagram 4 to determine where to cut the Fabric C  $10\frac{3}{8}"$  squares. Cut squares in half diagonally as before. Join 2 mirror-image triangles to make a Border 4 Block. Make 4.



Border 4 Block



Diagram 4

7. Sew long Fabric C borders to the sides. Sew Border 4 Blocks to the ends of short Fabric C borders and sew to the top and bottom.

## Finishing the Quilt

8. Layer the quilt with batting and backing and baste. Quilt in the ditch around borders and block patches. Quilt around the printed motifs. Fill in the background around the motifs with a quilted grid or other filler quilting design. Bind to finish the quilt.

# Winterthur Musuem John Hewson Quilt

All measurements are cut sizes and include ¼" seam allowances.



**Quilt Diagram**

1384 Broadway  
New York, NY 10018  
(800) 223-5678  
www.andoverfabrics.com

# Winterthur Museum John Hewson

by Kathy Hall for Winterthur Museum and Country Estates



makower uk®



5491-M\*



5622-M



5622-E



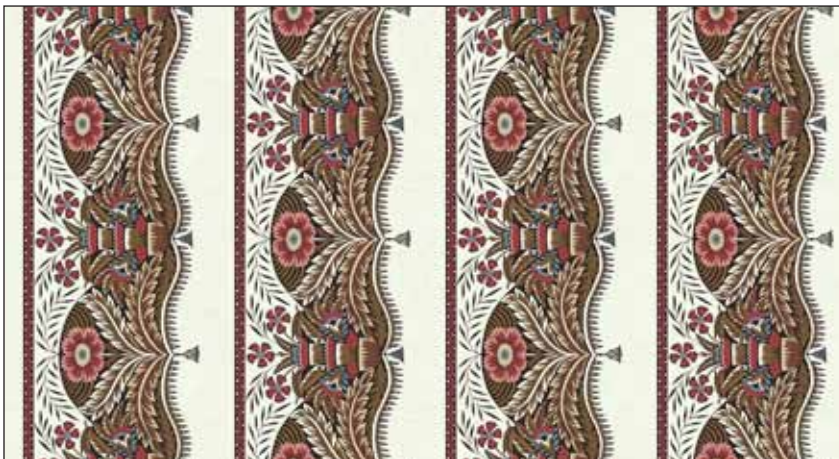
5493-M\*



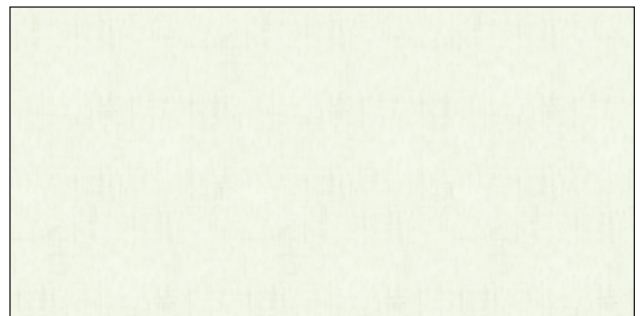
5623-M



5623-B



5492-M\*



3498-L2\*

\*Indicates fabric used in quilt pattern. Fabrics shown are 10% of actual size.

# Winterthur Museum John Hewson

by Kathy Hall for Winterthur Museum and Country Estates



**makower uk**®



5494-M\*



5495-M\*



5496-M\*



5497-M\*



5624-L



5624-B



5624-N



5624-R



5625-N



5625-R

\*Indicates fabric used in quilt pattern. Fabrics shown are 10% of actual size.